



## **CSU600A/AT** Current Supply Units

# User guide



# CSU600A/AT

## Current Supply Units

# User guide

### NOTICE OF COPYRIGHT & PROPRIETARY RIGHTS

© 2013-2023 Megger Sweden AB. All rights reserved.

The contents of this manual are the property of Megger Sweden AB. No part of this work may be reproduced or transmitted in any form or by any means, except as permitted in written license agreement with Megger Sweden AB. Megger Sweden AB has made every reasonable attempt to ensure the completeness and accuracy of this document. However, the information contained in this manual is subject to change without notice, and does not represent a commitment on the part of Megger Sweden AB. Any attached hardware schematics and technical descriptions, or software listings that disclose source code, are for informational purposes only. Reproduction in whole or in part to create working hardware or software for other than Megger Sweden AB products is strictly prohibited, except as permitted by written license agreement with Megger Sweden AB.

### TRADEMARK NOTICES

Megger® and Programma® are trademarks registered in the U.S. and other countries. All other brand and product names mentioned in this document are trademarks or registered trademarks of their respective companies.

Megger Sweden AB is certified according to ISO 9001 and 14001.

#### Postal address:

Megger Sweden AB  
Box 724  
SE-182 17 DANDERYD  
SWEDEN

#### Visiting address:

Megger Sweden AB  
Rinkebyvägen 19  
SE-182 36 DANDERYD  
SWEDEN

T +46 8 510 195 00  
E [seinfo@megger.com](mailto:seinfo@megger.com)

[www.megger.com](http://www.megger.com)



# 1 Safety



## Important

Read the manual and comply with the following instructions before using CSU600A/AT.

Always comply with local safety regulations.



## WARNING

### Protective ground (earth)

Single ground system. This equipment can be used only in electrical systems with single ground.

The user must verify before connecting this unit to power, that High Voltage Ground and Low Voltage Protective Ground create a single protective ground with no measurable voltage potential existing between these ground systems. If a voltage potential is found between the ground systems please consult local safety regulations.

Mains cord with protective conductor. The CSU600A/AT is equipped with a power cord with integrated safety ground pin. Do not defeat the safety ground in any manner. The equipment must be connected to a grounded mains outlet. Not doing so may result in fire or electric shock.

Separate ground wire. The CSU600A/AT case must also be grounded by the separate protective ground wire with connection to the Protective Conductor Terminal on top of the CSU600A/AT.

Check the continuity of the protective ground wire before each use. Make sure the connector is fastened properly to the CSU600A/AT Protective Conductor Terminal. Make sure the connection point at the ground system is fastened properly. Route the wire so that it is unlikely to be walked on or that it may loosen accidentally by someone or something moving near it.

Note: The protective ground wire must not be loosened while any input connector is attached to the contacts of a high voltage circuit breaker or another device being subject to inductive or capacitive coupled interference from surrounding high voltage wires.

Always ground the CSU600A/AT.

Before connecting CSU600A/AT, turn off its master ON/OFF switch.

Only connect CSU600A/AT to an outlet protected with 16 A overcurrent protection.

Unplug CSU600A/AT from the mains supply when it is left unattended or not in use.

Do not attempt to service the CSU600A/AT yourself. Opening or removing covers may expose you to dangerous voltage. If you attempt to service the CSU600A/AT yourself the warranty is no longer valid.

Do not use any accessories that are not intended for use together with the CSU600A/AT.

Unplug CSU600A/AT from the wall outlet before cleaning. Use a damp cloth for cleaning. Do not use liquid cleaners or aerosol cleaners.



## CAUTION

Use only approved mains detachable cable set with the CSU600A/AT. Main supply cables shall be rated for the maximum current for the equipment and the cable shall meet the requirements of IEC 60227 or IEC 60245. Mains supply cables certified or approved by a recognized testing authority are regarded as meeting this requirement.

Refer all servicing to qualified service personnel.

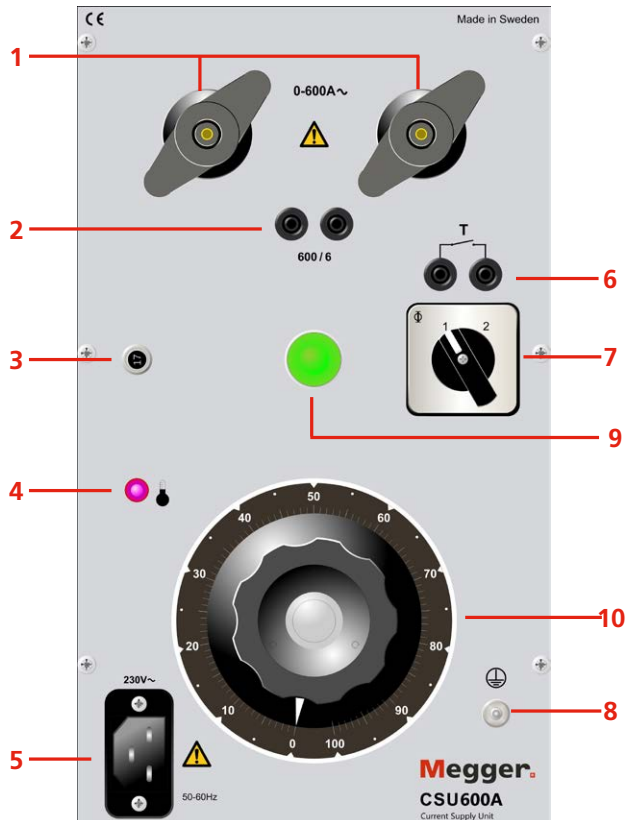
If you need to return CSU600A/AT, please use either the original crate or one of equivalent strength.



# 2 Control panels

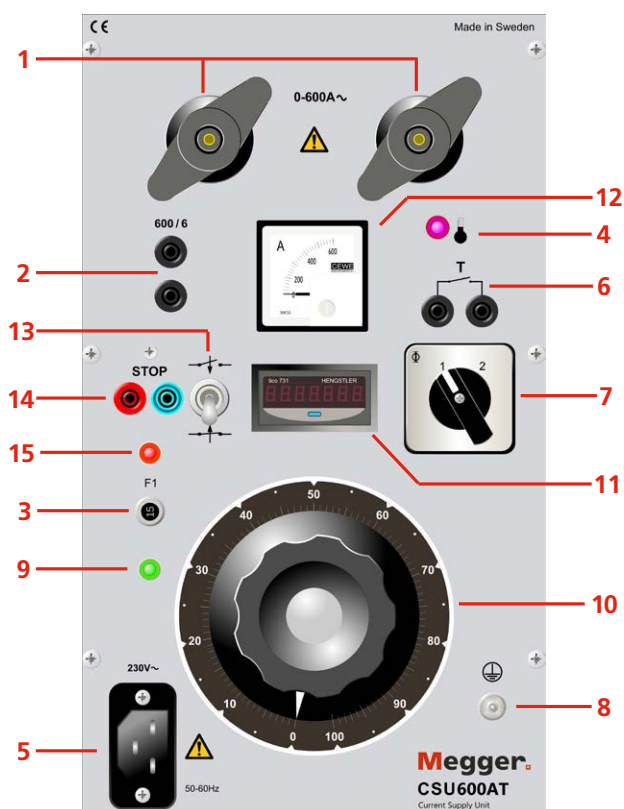
## CSU600A

1. Output terminals, 0-600 A AC
2. Output for external ammeter, 600/6 A  
**Important**  
*If not in use, this output must be short circuited.*
3. Miniature circuit breaker for mains power
4. Red lamp which indicates that thermal cutout has been triggered
5. Mains power connector
6. t-output, used to trig external equipment, for example a SVERKER™ when testing differential relays. Contacts are synchronized with (7)
7. Current output ON/OFF
8. Protective ground conductor terminal
9. Mains-power-on indicator lamp
10. Current control knob



# CSU600AT

1. Output terminals 0–600 A AC
2. Output for external ammeter, 600/6 A  
**Important**  
*If not in use, this output must be short circuited.*
3. Miniature circuit breaker for mains power
4. Red lamp which indicates that thermal cutout has been triggered
5. Mains power connector
6. t-output, used to trig external equipment, for example a SVERKER™ when testing differential relays. Contacts are synchronized with (7)
7. Current output ON/OFF
8. Protective ground conductor terminal
9. Mains-power-on indicator lamp
10. Current control knob
11. Timer (0 - 999.999 s)
12. Current indicator
13. Function switch (open or close function)
14. Timer stop input
15. Signal lamp for timer stop



# 3 Operating instructions

## General

Current Supply Units CSU600A/AT are used for:

- Performance and transformation-ratio testing of current transformers.
- Primary testing of relay-type cutouts.
- Testing circuit breakers.
- Commissioning of substation switchgear.

## Operating



### Warning

Make certain that switch (7) is at the OFF (0) position before making the connections.

- 1] Connect CSU600A/AT to ground (protective earth), terminal (8).
- 2] Set the variable transformer down to zero.
- 3] Connect the current cables to the device to be tested.
- 4] Connect CSU600A/AT to mains power.
- 5] Set the switch (7) in ON-position, "1".
- 6] Check the output current using an external ammeter. Connect the external ammeter to the built-in current transformer via terminal (2).

### Important

*When a load is applied to the CSU600A/AT, connector (2) must be short-circuited either via the jumper that accompanies the equipment or an external ammeter.*

- 7] Adjust the output current to the desired value using the current control knob (9).

**Note** *Do not exceed maximum load time, see "Specifications".*

*If you use a CSU600A and want to complete the test with time measurements, see "Connecting a timer to CSU600A" below.*

- 8] When you are finished, do not disconnect the current cables from the output terminals until you have turned switch (7) back to the OFF "0" position.

**Note** *The output transformer is protected with a thermal cut out. If it has been triggered the red lamp (4) will light. This protection will be automatically reset when the temperature drops.*

## Timer stop input (CSU600AT)

The stop input can be connected to potential-free terminals or to 12 – 250 V DC.

The timer can be stopped in the following ways:



- a) When a voltage is applied to the stop input or when a contact is closed.
- b) When a voltage applied to the stop input vanishes or when a contact is opened

When the timer is stopped, the current generation stops and the signal lamp (15) lights up.



### Important

You must apply the voltage with right polarity otherwise the timer wont stop.

**Note** *If the overheat protection has tripped the timer display will go out. It will reset automatically when the temperature drops.*

## Connecting a timer to CSU600A

- 1] Set switch (7) to OFF (0) position.
- 2] Connect the timer's (Megger TM200 is recommended) start input to the start timer terminals (6). Connect the timer stop input to a suitable point where it will detect the triggering of a relay-type cutout, a circuit breaker or the like.
- 3] Set switch (7) to the ON (1) position. When current is sent to the output terminals, start timer terminals will be short-circuited and the timer will start.

# 4 Specifications

## SPECIFICATIONS

Specifications are valid at nominal input voltage and an ambient temperature of +25°C, (77°F). Specifications are subject to change without notice.

### Environment

Application field The instrument is intended for use in high-voltage substations and industrial environments.

Temperature

Operating 0°C to +50°C (32°F to +122°F)

Storage & transport -40°C to +70°C (-40°F to +158°F)

Humidity 5% – 95% RH, non-condensing

### CE-marking

EMC 2014/30/EU

LVD 2006/95/EC

RoHS 2011/65/EU

### General

Mains voltage 115 or 230 V AC, 50/60 Hz

Power consumption 115 V, 667 VA cont. (interm. 3738 VA)  
(max) 230 V, 851 VA cont. (interm. 6440 VA)

Protection Thermal cut-outs and miniature circuit breakers

Dimensions

Instrument 356 x 203 x 241 mm (14.0" x 8.0" x 9.5")

Transport case 610 x 290 x 360 mm (24.0 x 11.4 x 14.2")

Weight 21.9 kg (48 lbs) 38.3 kg (84.4 lbs) with accessories and carrying case

Current cables 2 x 5 m (16 ft), 50 mm<sup>2</sup>

### Measurement section

Output for external ammeter 600/6 A

Inaccuracy ±0.5%

Timer (only CSU600AT)

Range 0-999.999 s

Resolution 1 ms

Inaccuracy ±0.02% of shown value 2 ms

**Other** Output for starting external timer

### Outputs, AC, intermittent output<sup>1)</sup> (CAT I)

Current	115 V mains voltage		230 V mains voltage	
	Load time	Minimum output voltage	Load time	Minimum output voltage
0 A	Cont.	6.0 V	Cont.	9.5 V
75 A	–	–	Cont.	9.3 V
100 A	Cont.	5.6 V	1 h	9.0 V
200 A	15 min	5.3 V	5 min	8.5 V
300 A	1.5 min	4.9 V	2 min	8.0 V
400 A	1 min	4.6 V	1 min	7.5 V
500 A	20 s	4.2 V	30 s	7.0 V
600 A	15 s	3.9 V	20 s	6.5 V

1) Maximum load time from cold state 25°C (77°F). Not valid for repeated tests.

## Maximum cable lengths at 600 A

115 V mains

2 x 5 m (16 ft), 70 mm<sup>2</sup>

230 V mains

2 x 5 m (16 ft), 50 mm<sup>2</sup>

2 x 10 m (33 ft), 70 mm<sup>2</sup>

2 x 15 m (49 ft), 95 mm<sup>2</sup>





## Local Sales office

Visit: [www.megger.com](http://www.megger.com)

## Manufacturing sites

Megger Limited  
Archcliffe Road  
Dover  
Kent  
CT17 9EN  
ENGLAND

T. +44 (0)1 304 502101

F. +44 (0)1 304 207342

Megger GmbH  
Weststraße 59  
52074 Aachen  
T. +49 (0) 241 91380 500  
E. [info@megger.de](mailto:info@megger.de)

Megger USA - Valley Forge  
Valley Forge Corporate Center  
2621 Van Buren Avenue  
Norristown  
Pennsylvania, 19403  
USA

T. +1 610 676 8500

F. +1 610 676 8610

Megger USA - Dallas  
4545 West Davis Street  
Dallas TX 75237  
USA  
T. 800 723 2861 (USA only)  
T. +1 214 333 3201  
F. +1 214 331 7399  
E. [USsales@megger.com](mailto:USsales@megger.com)

Megger AB  
Rinkebyvägen 19, Box 724,  
SE-182 17 DANDERYD  
SWEDEN  
T. +46 08 510 195 00  
E. [seinfo@megger.com](mailto:seinfo@megger.com)

Megger USA - Fort Collins  
4812 McMurry Avenue  
Suite 100  
Fort Collins CO 80525  
USA  
T. +1 970 282 1200

**This instrument is manufactured in SWEDEN.**

**The company reserves the right to change the specification or design without prior notice.**

**Megger is a registered trademark**

© Megger Limited 2023

[www.megger.com](http://www.megger.com)