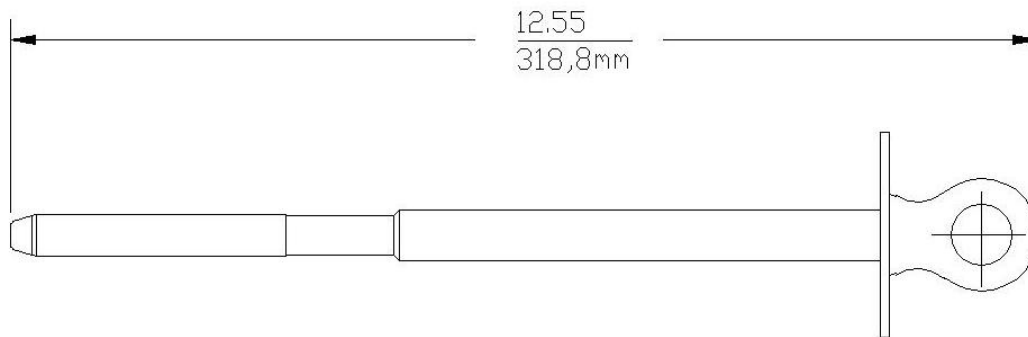


15-35kV	200A Loadbreak Test Rod	370TR
---------	-------------------------	-------



The Elastimold® **370TR** test rod is designed to test and allow determination of the condition of the circuit, energized or de-energized. It is designed to mate with all Elastimold® 200 Amp loadbreak bushing products to provide a convenient place to test the circuit with a high voltage meter.

## Ordering Instructions:

To order, specify number **370TR** Test Rod.

### Each kit contains the following:

- |   |                   |         |
|---|-------------------|---------|
| 1 | Test Rod          | 370TR   |
| 1 | Instruction Sheet | IS-0810 |